



GAT MONTHLY MEMBERSHIP PROGRESS REPORT

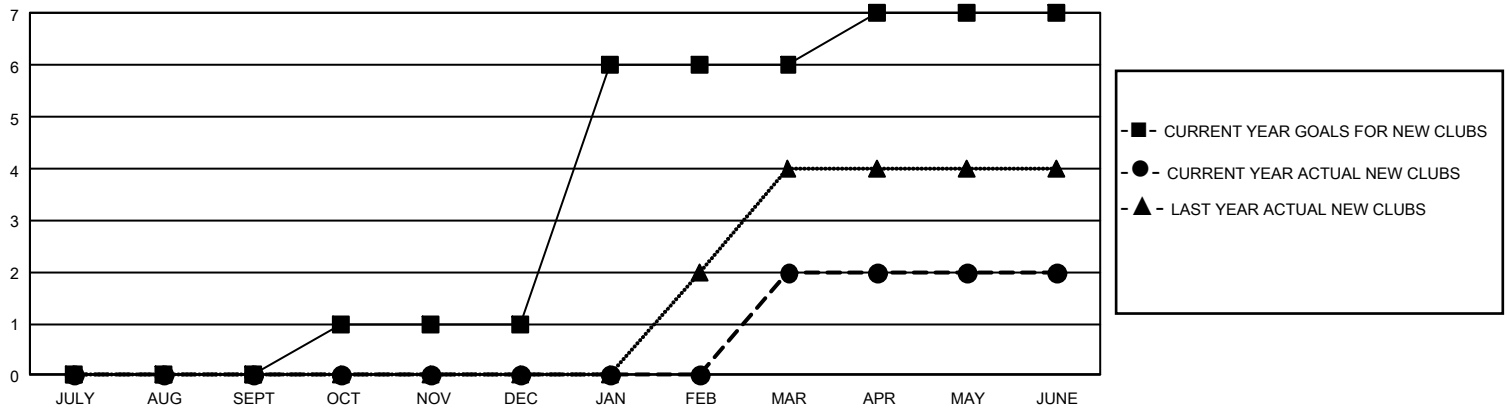
Results as of: 6/30/2025

GMT Constitutional Area 5 - J, Group H

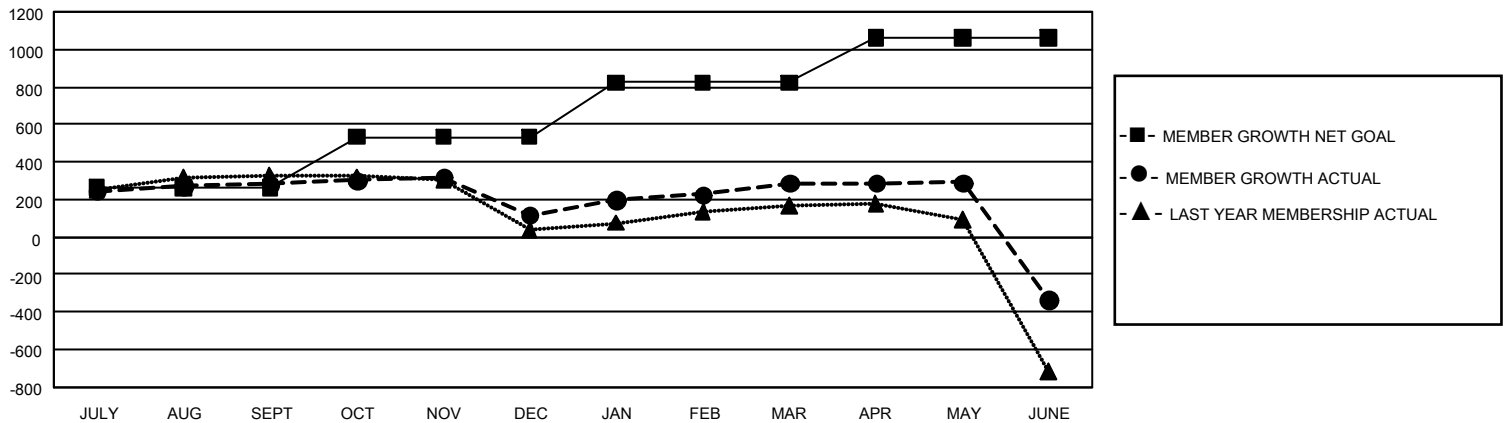
REPORT DOES NOT INCLUDE CLUBS IN UNDISTRICTED AREAS.

Clubs				Members			
RESULTS FOR 2024-2025				RESULTS FOR 2024-2025			
QUARTER	NEW CLUB GOAL	NEW CLUBS	DROPPED CLUBS	QUARTER	MEMBER GROWTH NET GOAL	MEMBER GROWTH ACTUAL	DROPPED MEMBERS ACTUAL (including transfers)
JULY/AUG/SEPT	0	0	1	JULY/AUG/SEPT	262	547	232
OCT/NOV/DEC	3	0	0	OCT/NOV/DEC	270	183	334
JAN/FEB/MAR	15	2	1	JAN/FEB/MAR	290	429	223
APR/MAY/JUNE	3	0	5	APR/MAY/JUNE	238	335	910

GOALS AND ACTUAL NEW CLUBS CUMULATIVE



GOALS AND ACTUAL MEMBERS CUMULATIVE



DROPPED CLUBS: 7

294 CLUBS OF 382 ADDED 1 OR MORE NEW MEMBERS

GENDER DISTRIBUTION

MALE	12,798 (74.75%)
FEMALE	4,315 (25.20%)
NON BINARY	0 (0.00%)
PREFER NOT TO ANSWER	7 (0.04%)

DROPPED MEMBERS

DECEASED	141
CLUB CANCELLED	13
OTHER	1,518
TOTAL	1,672

[CLICK HERE FOR CUMULATIVE MEMBERSHIP DATA](#)

TOTAL FAMILY UNIT MEMBERS 6,726

FAMILY MEMBERS PAYING HALF DUES 3,713